

PIM Master™ MW82119A

40 Watts Battery-operated Passive Intermodulation Analyzer

Featuring Distance-to-PIM™ (DTP)

The Fastest Way to Pinpoint the Source of PIM

LTE 700
700 MHz

LTE 800
800 MHz

Cellular Band
850 MHz

E-GSM Band
900 MHz

DCS Band
1800 MHz

PCS/AWS Bands
1900/2100 MHz

UMTS Band
2100 MHz

LTE 2600
2600 MHz



PIM Master™ Passive Intermodulation Analyzer



PIM Master™ Overview



PIM Master MW82119A 40 Watts, Battery-operated



Ideal solution for tower mounted Radio Head installations



PIM Master™ Introduction

Anritsu Company introduces the first battery-operated high power Passive Intermodulation (PIM) testing solution for the major wireless standards in use around the world. PIM is a form of interference generated by passive components that are normally thought of as linear such as connectors, cable assemblies, filters and antennas. However, when subject to high RF power levels found in cellular systems, these devices can generate spurious signals that increase the receiver noise floor and reduce site performance.

The PIM Master accurately measures PIM performance by injecting two CW test tones into the antenna feed network and recording the magnitude of the 3rd, 5th, or 7th order intermodulation products falling in the receive band of the system. The MW82119A is able to perform the following measurements enabling test technicians to quickly find and eliminate PIM problems found at the cell site:

- PIM versus Time
- Noise Floor
- Swept PIM
- Distance-to-PIM™ (DTP)

The PIM Master's small size and light weight combined with battery operation make it the ideal solution for verifying performance at difficult to access sites such as Remote Radio Head (RRH) installations or indoor Distributed Antenna Systems (DAS). Performing a PIM test at these sites often involves a tower climb or carrying the equipment up a ladder or through small access ports to reach the required point of test. The enhanced portability of the MW82119A enables high power PIM testing where required without heavy lifting and without long extension cords.

The PIM Master includes Anritsu's patented Distance-to-PIM™ (DTP) technology for accurately determining the location of PIM faults both inside the feed system as well as beyond the antenna. This technology becomes critically important for fault finding DAS installations due to the complexity of the feed system and large number of RF interconnects. Without DTP, finding and eliminating PIM requires a process of elimination involving the movement of low PIM loads in the network until the PIM problem disappears. This process is not only time consuming, but it also means that good connections may be opened (and potentially damaged) in the process of locating PIM problems. Distance-to-PIM allows technicians to quickly and efficiently locate PIM sources at a site resulting in quicker site repairs and lower cost.

As with all Anritsu Handheld products, the MW82119A has been designed and tested to rigorous standards for shock, vibration and temperature extremes to ensure reliable service in an outdoor environment.

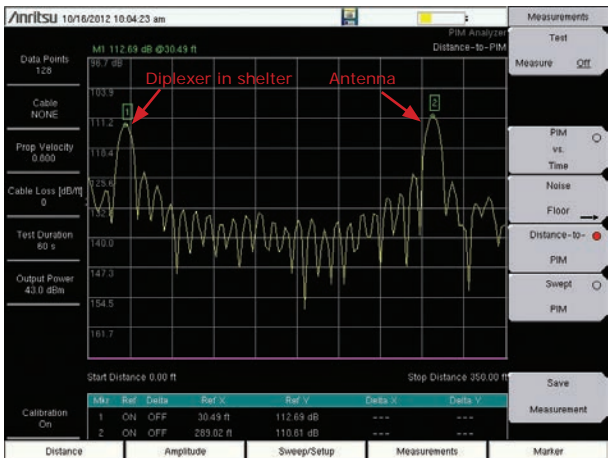
2 x 40 W Test Capability

Even though the package is small and it is battery operated, the MW82119A is a high performance PIM test solution allowing operators to adjust output power from 25 dBm (0.3 Watts) for indoor DAS testing to 46 dBm (40 Watts) for macro site testing. In both indoor and outdoor systems, PIM interference is highly dependent on the power level being transmitted by that system. By matching the PIM test power level more closely to the actual power level used at the site, operators will gain a clearer understanding of the true interference generated by both the RF infrastructure and the environment where the antenna is placed.

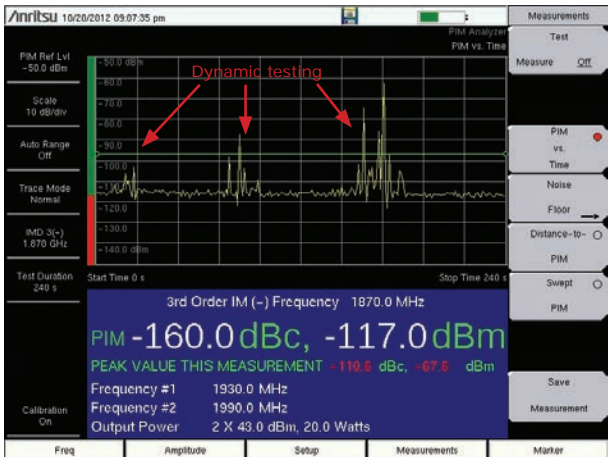
PIM Master™ Passive Intermodulation Analyzer



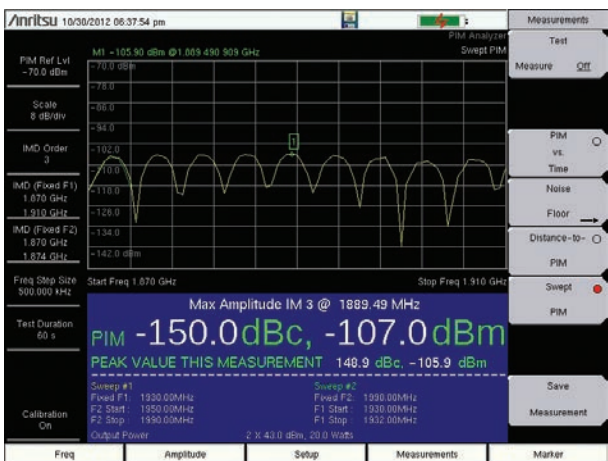
PIM Master™ Overview



Distance-to-PIM (DTP)
PIM Level (dBm) vs. Distance (meter)



PIM vs. Time
PIM Level (dBm) vs. Time (second)



Swept PIM
PIM Level (dBm) vs. Frequency (MHz)

Distance-to-PIM™ (DTP)

Distance-to-PIM (DTP) is similar to Distance-to-Fault (DTF), which Anritsu introduced in the Site Master™ in 1997 for identifying the location of impedance mismatches in a feed line. DTP quickly and accurately identifies the location of PIM faults inside the feed system as well as beyond the antenna. This capability eliminates the guesswork involved in isolating PIM sources and speeds site repairs.

Up to 6 markers can be activated in Distance-to-PIM to identify the magnitude and distance to PIM faults found in the system. A trace overlay feature allows real time comparison between the active DTP measurement and a previously saved DTP trace. This capability can be used to compare “before and after” results on a site or to clearly show the distance between an unknown PIM source and a “PIM marker” placed on the antenna radome.

PIM vs. Time

The PIM Master includes a PIM versus Time measurement that tracks not only the instantaneous PIM level but also records the maximum PIM level experienced throughout a fixed frequency PIM test. The two test frequencies, transmit power level, intermodulation order (3rd, 5th or 7th) and test duration can be easily adjusted by the user to meet the test requirements.

This mode is useful for dynamic PIM tests as it not only captures the peak PIM value for pass / fail determination but also provides a visual indication of the stability of the system under test. When a limit line is entered in this mode, the color of the PIM magnitude changes to red when the value has exceeded the limit value. The peak value will remain red indicating a failure even if the PIM level returns to a passing level after the dynamic stress has been removed.

Swept PIM

When making a Swept PIM measurement, the PIM Master is able to evaluate changes in PIM magnitude versus Intermodulation (IM) frequency. This test is conducted by holding one transmit tone fixed while varying the frequency of the second transmit tone, causing the IM product to “sweep” across a range of frequencies in the receive band of the system. The magnitude of the PIM generated versus frequency is displayed and can be compared to a user-selected pass / fail limit.

PIM measurements are the vector sum of all PIM signals generated on a line at the IM frequency being tested. When multiple PIM sources exist, it is possible for the signals to combine out of phase at a particular test frequency indicating a passing result when the individual PIM levels are actually failures. A swept PIM test varies the IM frequency over a range of frequencies providing the user a clearer picture of the true PIM performance of the system. It is worth mentioning that Distance-to-PIM measurements provide the same function as they also evaluate a range of frequencies rather than a single IM frequency.

Remote Control

The PIM Master can be configured for remote control via WiFi to support a variety of testing scenarios. Line of site distances of > 100 m (> 328 ft) have been achieved allowing a person on the ground to control the test equipment while a person at the top of the mast makes connections and performs dynamic testing. This capability is also useful for rooftop testing, allowing one person to control the test remotely while following the cable run and performing dynamic tests.

Noise Floor Measurement

A special test mode is available that activates the PIM Master receiver to monitor the IM product frequency vs. time. During this measurement, the PIM Master transmitters are disabled. This feature allows the user to quickly check to make sure the spectrum is clear before performing a PIM test.

Easy to view display

The PIM Master uses the same large, field proven, color touch screen displays found in other Anritsu Handheld products. Five different screen settings are available to enhance visibility in the environment where the test will be performed. This includes a Black & White setting to improve readability in direct sunlight as well as a Night Vision setting to reduce screen brightness for nighttime operation.

PIM Master™ Passive Intermodulation Analyzer

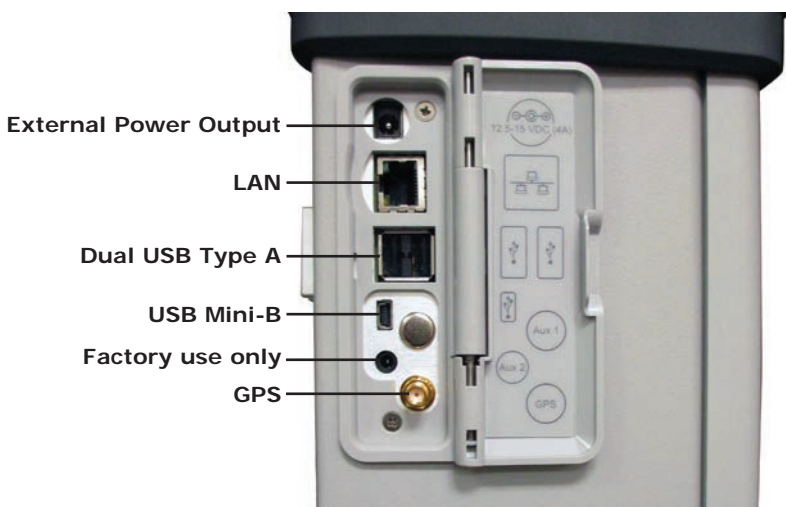


PIM Master Passive Intermodulation Analyzer Features



Size: 350 mm x 314 mm x 152 mm (13.8 in x 12.4 in x 6.0 in)

Lightweight: 9.0 kg to 12.2 kg (20 lb to 27 lb) depending on frequency option



Connector Panel on the left side of MW82119A

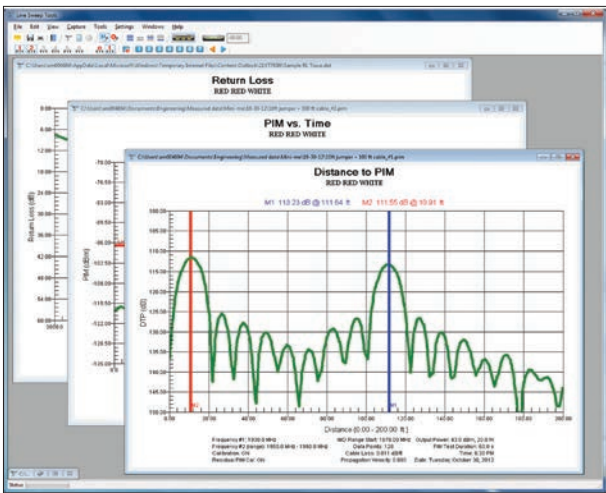


Remote Access Tool for Tower Top Testing

PIM Master™ Passive Intermodulation Analyzer



PIM Report Generation and Certified Training



Line Sweep Tools (LST) utilized for report generation on a PIM trace

Line Sweep Tools for Cable, Antenna, and PIM Analyses

Line Sweep Tools (LST) is a post processing tool to manage and archive measured data from Anritsu's cable & antenna analyzers as well as PIM analyzers. Measured PIM results from different frequency band PIM Analyzers as well as measured data from your SiteMaster™ can be combined together into a single, unified site report.

In one report an operator can have all of the information needed to verify the integrity of an antenna system with the measurements of:

- PIM
- Distance-to-PIM (DTP)
- Return Loss
- Insertion Loss
- Distance-to-Fault (DTF)

Contractors, technicians, and engineers can be more productive with one cohesive tool to learn and use in managing antenna line quality measurements.

PIM Master™ Certified PIM Measurement Training Course

Specialized PIM Master™ passive intermodulation measurement training is an intense one-day instructor led training course that focuses on making PIM measurements (theory and lab). This is modeled on our successful Site Master™ Certified Line Sweep course.

- Brief Course Outline
 - Definition and Description
 - How PIM differs from Return Loss
 - Why is PIM a problem
 - How to test for PIM
 - PIM testing process
 - Hints for successful testing
 - Assessing results
- Labs
 - Hooking up the equipment and confirming proper operation
 - Measuring known good and bad devices
 - Device measurement practice
- Exams
 - Theory and safety
 - Hands-on practical
- Certification (after passing exams)
 - Certificate of Completion
 - Wallet-sized photo ID

Students will learn technical aspects of PIM measurements, how to set up a PIM measurement, useful examples of what works and what doesn't, interpreting results, and locating the PIM.

Customer Support

Like all Anritsu products, the PIM Master has a range of support products, services and training allowing you to maximize your return-on-investment.

With Anritsu's design know-how and demanding production testing and performance verification you can count on the PIM Master to give you years of reliable, dependable service.

Passive Intermodulation (PIM) Test Report
ACME CONST SVS

Site Details

Site	Operator	Certification
GA3001	John Smith	PM100301

Test Parameters

Tone 1 Frequency (MHz)	Tone 2 Frequency (MHz)	IM3 Frequency (MHz)
1930	1990	1870

Test Results

Test Point Description	Time	GPS	Power (dBm)	Limit (dBc)	PIM (dBc)	PIM Peak (dBc)	Result
LOW PIM	10/28/2013	N 37° 54' 49"	43.0	140.0	172.3	168.4	Pass

Line Sweep Tools Report

Company: Acme Construction Services
Prepared for: J. Smith
Location: Denver, CO
Date: 6/20/2013 5:04:42 PM

PIM vs. Time
M1: -62.87 dB @ 14.08 s

Distance to PIM
M1: 35.68 dB @ 6.27 m M2: 68.18 dB @ 35.90 m

Prepared by: _____ Approved by: _____

Test Reports generated using Line Sweep Tools (LST)

PIM Master™ Specifications

General Specifications

All specifications and characteristics apply under the following conditions, unless otherwise stated: 1) After 5 minutes of warm-up time, where the instrument is left in the ON state; 2) All specifications subject to change without notice; 3) Typical performance is the measured performance of an average unit; 4) Recommended calibration cycle is 12 months.

Measurements		
PIM vs. Time		3 rd , 5 th , and 7 th order intermodulation product when in receive band (user selectable)
Noise Floor		Noise Floor vs. Time at selected IM product frequency
Distance-to-PIM		Distance and relative magnitude of multiple PIM sources
Swept PIM		3 rd , 5 th , and 7 th order intermodulation product when in receive band (user selectable)
Instrument Setup Parameters		
Frequency		Carrier F1, Carrier F2, Intermodulation Order (3 rd , 5 th , 7 th)
Amplitude		Ref Value, Scale, Auto Range (On/Off), Amplitude Tone (On/Off)
Setup		Output Power, Test Duration (1 s to 1,200 s)
Limit Lines		Limit (Upper/Lower), On/Off, Limit Move, Limit Alarm (On/Off, PASS/FAIL indicator)
GPS		On/Off, 3.3/5.0 V
DTP		Cable Velocity, Distance
PIM Measurement Ranges		
RF Test Power		Two CW tones 25 dBm to 46 dBm, 0.1 dBm steps
Residual PIM Performance		<-117 dBm, <-125 dBm typical (2x 43 dBm test tones)
PIM Measurement Range		-70 dBm to -130 dBm
Option	Band	Frequency Range
Option 0700	LTE 700	Tx ₁ : 734 MHz to 734.5 MHz, Tx ₂ : 746 MHz to 768 MHz Rx _{Lower} : 698 MHz to 717 MHz, Rx _{Upper} : 777 MHz to 806 MHz
Option 0800	LTE 800	Tx ₁ : 791 MHz to 795 MHz, Tx ₂ : 811.5 MHz to 821 MHz Rx: 832 MHz to 862 MHz
Option 0850	Cellular 850	Tx ₁ : 869 MHz to 871 MHz, Tx ₂ : 881.5 MHz to 894 MHz Rx: 824 MHz to 849 MHz
Option 0900	E-GSM 900	Tx ₁ : 925 MHz to 937.5 MHz, Tx ₂ : 951.5 MHz to 960 MHz Rx: 880 MHz to 915 MHz
Option 0180	DCS 1800	Tx ₁ : 1805 MHz to 1837 MHz, Tx ₂ : 1857.5 MHz to 1880 MHz Rx: 1710 MHz to 1785 MHz
Option 0193	PCS/AWS	Tx ₁ : 1930 MHz to 1940 MHz, Tx ₂ : 1955 MHz to 1995 MHz, Tx ₃ : 2110 MHz to 2155 MHz, Rx ₁ : 1850 MHz to 1910 MHz (using Tx ₁ and Tx ₂), Rx ₂ : 1710 MHz to 1755 MHz (using Tx ₁ and Tx ₃)
Option 0210	UMTS 2100	Tx ₁ : 2110 MHz to 2112.5 MHz, Tx ₂ : 2130 MHz to 2170 MHz Rx _{Lower} : 1920 MHz to 1980 MHz, Rx _{Upper} : 2050 MHz to 2090 MHz
Option 0260	LTE 2600	Tx ₁ : 2620 MHz to 2630 MHz, Tx ₂ : 2650 MHz to 2690 MHz Rx: 2500 MHz to 2570 MHz
PIM Master Connectors		
Test Port		7/16 DIN, female, 50 Ω
Dual USB Type A		2x Type A (connect USB Flash Drive and USB Power Sensor)
USB Mini-B		1x Mini-B (connect to PC for data transfer)
GPS		SMA, female (with GPS option only)
External Power		2.1 mm x 5.5 mm barrel connector, 12 to 15 VDC, < 5.0 A
Display		
Size		213 mm (8.4 in) touch screen
Resolution		800 x 600
Battery		
Type		Li-Ion
Battery Operation		>3.0 hours, typical
Power		
Emergency Stop		Red push button
AC/DC Adapter		Input: 100-240 VAC, 50/60 Hz, Output: 12 VDC
Electromagnetic Compatibility		
Australia and New Zealand		C-tick N274
Interference		EN 61326-1:2006
Emissions		EN 55011:2007
Immunity		EN 61000-4-2/-4-3/-4-4/-4-5/-4-6/-4-11
European Union		CE Mark, EMC Directive 2004/108/EC
Safety		
Safety Class		2006/95/EC, EN 61010-1 Class 1
Product Safety		IEC 60950-1 when used with Anritsu Company supplied Power cable
Environmental		
Operating Temperature		-10 °C to 55 °C
Relative Humidity		5 % to 95 % at +40 °C, Non-condensing
Shock		MIL-PRF-28800F Class 2
Storage		-51 °C to 71 °C
Altitude		4600 meters, operating and non-operating
Size and Weight		
Size		350 mm x 314 mm x 152 mm (13.8 in x 12.4 in x 6.0 in)
Weight		9.0 kg to 12.2 kg (20 lb to 27 lb)

PIM Master™ Ordering Information



Ordering Information



Model Number	Description
MW82119A	PIM Master™ Passive Intermodulation Analyzer (must be ordered one with ONE frequency option) (must order one, and one only)
Frequency Options	
MW82119A-0700	LTE 700
MW82119A-0800	LTE 800
MW82119A-0850	Cellular 850
MW82119A-0900	E-GSM 900
MW82119A-0180	DCS 1800
MW82119A-0193	PCS/AWS 1900/2100
MW82119A-0210	UMTS 2100
MW82119A-0260	LTE 2600
Other Options	
MW82119A-0019	High Accuracy Power Meter (requires USB power sensor)
MW82119A-0031	GPS Receiver (requires GPS antenna)
MW82119A-0098	Standard Calibration to ISO 17025 and/or Z540.1
MW82119A-0099	Premium Calibration to ISO 17025 and/or Z540.1 plus test data

Standard Accessories (included with PIM Master)



Part Number	Description
2000-1786-R	Soft Carrying Case, Screen Access
2000-1714-R	Shoulder Strap
2000-1691-R	Stylus with Coiled Tether
2000-1797-R	Screen Protector Film, 8.4 in.
1091-387-R	Adapter, 7/16 DIN(f) to 7/16 DIN(m), 50 Ω (Connector Saver)
2300-577	Anritsu Software Tool Box for Handheld RF Instruments Disc
633-75	High-capacity Li-Ion Battery Pack
40-187-R	AC/DC Power Supply
(Country dependent)	AC Power Cable
806-141-R	Automotive Power Adapter, 12 VDC, 60 W
2000-1371-R	Ethernet Cable, 7 ft/213 cm
3-2000-1498	USB A-mini B Cable, 10 ft/305 cm
10920-00060	Handheld Instruments Documentation Disc
	Three-year warranty (battery one-year warranty)
	Certificate of Calibration

Optional Accessories



Part Number	Description
2000-1745-R	PIM Master Backpack Accessory Kit
2000-1746-R	PIM Master Hard Case Accessory Kit
16DD50-2.75-R	Armored PIM Test Cable, 2.75 m, 7/16 DIN(m) to 7/16 DIN(m), 50 Ω
16DD50-4.0-R	Armored PIM Test Cable, 4.0 m, 7/16 DIN(m) to 7/16 DIN(m), 50 Ω
2000-1626-R	PIM Test Cable, 3.0 m, 7/16 DIN(m) to 7/16 DIN(m), 50 Ω
2000-1783-R	PIM Test Cable, 3.0 m, 7/16 DIN(m) to 7/16 DIN(f), 50 Ω
2000-1724-R	Low PIM Termination, 700 MHz to 2600 MHz, 40 W, 7/16 DIN(m), 7/16 DIN(f), 50 Ω
2000-1749-R	Low PIM Termination, 700 MHz to 2600 MHz, 7/16 DIN(m), 7/16 DIN(f), 50 Ω (for MW82119A only)
1091-390-R	PIM Standard, -80 dBm ±3 dB @ 1775 MHz, with 2x 20 W, 7/16 DIN(m) to 7/16 DIN(f), 50 Ω
1091-421-R	Low PIM Adapter, 7/16 DIN(m) to 7/16 DIN(m), 50 Ω
1091-422-R	Low PIM Adapter, 7/16 DIN(m) to 7/16 DIN(f), 50 Ω
1091-423-R	Low PIM Adapter, 7/16 DIN(m) to N(m), 50 Ω
1091-424-R	Low PIM Adapter, 7/16 DIN(m) to N(f), 50 Ω
1091-425-R	Low PIM Adapter, 7/16 DIN(f) to N(f), 50 Ω
1091-426-R	Low PIM Adapter, 7/16 DIN(f) to N(m), 50 Ω
1091-427-R	Low PIM Adapter, 7/16 DIN(f) to 7/16 DIN(f), 50 Ω
1091-431-R	Low PIM Adapter, 45°, 7/16 DIN(m) to 7/16 DIN(f), 50 Ω
1091-433-R	Low PIM Adapter, 4.1/9.5(f) to 7/16 DIN(f), 50 Ω
1091-434-R	Low PIM Adapter, 4.1/9.5(m) to 7/16 DIN(f), 50 Ω
01-510	Adjustable Wrench
01-513-R	1¼" Torque Wrench
67135	Backpack for Accessories
760-259-R	Transit Case (holds MW82119A PIM Analyzer only)
760-265-R	Transit Case (holds MW82119A PIM Analyzer plus accessories)
2000-1374	Dual Battery Charger
2000-1528-R	GPS Antenna, SMA(m) with 15 ft cable
2000-1652-R	GPS Antenna, SMA(m) with 1 ft cable
2000-1760-R	GPS Antenna, SMA(m), 25 dB gain
MA24106A	High Accuracy RF Power Sensor, 50 MHz to 6 GHz, +23 dBm
MA24105A	Inline High Power Sensor, 350 MHz to 4 GHz, +3 dBm to +51.76 dBm
10580-00370	Certified PIM Master™ PIM Measurement Training Course

Manuals

Part Number	Description
10580-00285	User Guide (soft copy on Handheld Instruments Documentation Disc and @ www.anritsu.com)
10920-00060	Handheld Instruments Documentation Disc

• **United States**

Anritsu Company

1155 East Collins Boulevard, Suite 100,
Richardson, TX, 75081 U.S.A.
Toll Free: 1-800-267-4878
Phone: +1-972-644-1777
Fax: +1-972-671-1877

• **Canada**

Anritsu Electronics Ltd.

700 Silver Seven Road, Suite 120,
Kanata, Ontario K2V 1C3, Canada
Phone: +1-613-591-2003
Fax: +1-613-591-1006

• **Brazil**

Anritsu Eletrônica Ltda.

Praça Amadeu Amaral, 27 - 1 Andar
01327-010 - Bela Vista - São Paulo - SP - Brazil
Phone: +55-11-3283-2511
Fax: +55-11-3288-6940

• **Mexico**

Anritsu Company, S.A. de C.V.

Av. Ejército Nacional No. 579 Piso 9, Col. Granada
11520 México, D.F., México
Phone: +52-55-1101-2370
Fax: +52-55-5254-3147

• **United Kingdom**

Anritsu EMEA Ltd.

200 Capability Green, Luton, Bedfordshire LU1 3LU, U.K.
Phone: +44-1582-433280
Fax: +44-1582-731303

• **France**

Anritsu S.A.

12 avenue du Québec, Batiment Iris 1-Silic 612,
91140 Villebon-sur-Yvette, France
Phone: +33-1-60-92-15-50
Fax: +33-1-64-46-10-65

• **Germany**

Anritsu GmbH

Nemetschek Haus, Konrad-Zuse-Platz 1
81829 München, Germany
Phone: +49-89-442308-0
Fax: +49-89-442308-55

• **Italy**

Anritsu S.r.l.

Via Elio Vittorini 129, 00144 Roma Italy
Phone: +39-06-509-9711
Fax: +39-06-502-2425

• **Sweden**

Anritsu AB

Kistagången 20B, 164 40 KISTA, Sweden
Phone: +46-8-534-707-00
Fax: +46-8-534-707-30

• **Finland**

Anritsu AB

Teknobulevardi 3-5, FI-01530 Vantaa, Finland
Phone: +358-20-741-8100
Fax: +358-20-741-8111

• **Denmark**

Anritsu A/S

Kay Fiskers Plads 9, 2300 Copenhagen S, Denmark
Phone: +45-7211-2200
Fax: +45-7211-2210

• **Russia**

Anritsu EMEA Ltd.

Representation Office in Russia

Tverskaya str. 16/2, bld. 1, 7th floor.
Russia, 125009, Moscow
Phone: +7-495-363-1694
Fax: +7-495-935-8962

• **United Arab Emirates**

Anritsu EMEA Ltd.

Dubai Liaison Office

P O Box 500413 - Dubai Internet City
Al Thuraya Building, Tower 1, Suite 701, 7th Floor
Dubai, United Arab Emirates
Phone: +971-4-3670352
Fax: +971-4-3688460

• **Singapore**

Anritsu Pte. Ltd.

11 Chang Charn Road, #04-01, Shriro House
Singapore 159640
Phone: +65-6282-2400
Fax: +65-6282-2533

• **India**

Anritsu India Pvt Ltd.

2nd & 3rd Floor, #837/1, Binnamangla 1st Stage,
Indiranagar, 100ft Road, Bangalore - 560038, India
Phone: +91-80-4058-1300
Fax: +91-80-4058-1301

• **P. R. China (Shanghai)**

Anritsu (China) Co., Ltd.

27th Floor, Tower A,
New Caohejing International Business Center
No. 391 Gui Ping Road Shanghai, Xu Hui Di District,
Shanghai 200233, P.R. China
Phone: +86-21-6237-0898
Fax: +86-21-6237-0899

• **P. R. China (Hong Kong)**

Anritsu Company Ltd.

Unit 1006-7, 10/F., Greenfield Tower, Concordia Plaza,
No. 1 Science Museum Road, Tsim Sha Tsui East,
Kowloon, Hong Kong, P. R. China
Phone: +852-2301-4980
Fax: +852-2301-3545

• **Japan**

Anritsu Corporation

8-5, Tamura-cho, Atsugi-shi,
Kanagawa, 243-0016 Japan
Phone: +81-46-296-1221
Fax: +81-46-296-1238

• **Korea**

Anritsu Corporation, Ltd.

5FL, 235 Pangyoyeok-ro, Bundang-gu, Seongnam-si,
Gyeonggi-do, 463-400 Korea
Phone: +82-31-696-7750
Fax: +82-31-696-7751

• **Australia**

Anritsu Pty Ltd.

Unit 21/270 Ferntree Gully Road,
Notting Hill, Victoria 3168, Australia
Phone: +61-3-9558-8177
Fax: +61-3-9558-8255

• **Taiwan**

Anritsu Company Inc.

7F, No. 316, Sec. 1, Neihu Rd., Taipei 114, Taiwan
Phone: +886-2-8751-1816
Fax: +886-2-8751-1817



The Master Users Group is an organization dedicated to providing training, technical support, networking opportunities and links to Master product development teams. As a member you will receive the Insite Quarterly Newsletter with user stories, measurement tips, new product news and more.

Visit us to register today: www.anritsu.com/MUG



Customers in the United States can receive a quote to purchase a product or order accessories by visiting our online ordering site: www.ShopAnritsu.com

Training at Anritsu

Anritsu has designed courses to help you stay up to date with technologies important to your job.

For available training courses visit: www.anritsu.com/training



Anritsu utilizes recycled paper and environmentally conscious inks and toner.



® Anritsu All trademarks are registered trademarks of their respective owners. Data subject to change without notice. For the most recent specifications visit: www.anritsu.com

MW82119A PIM Master PB
©2014 Anritsu Company, USA
All Rights Reserved.



11410-00679



J

Please Contact: